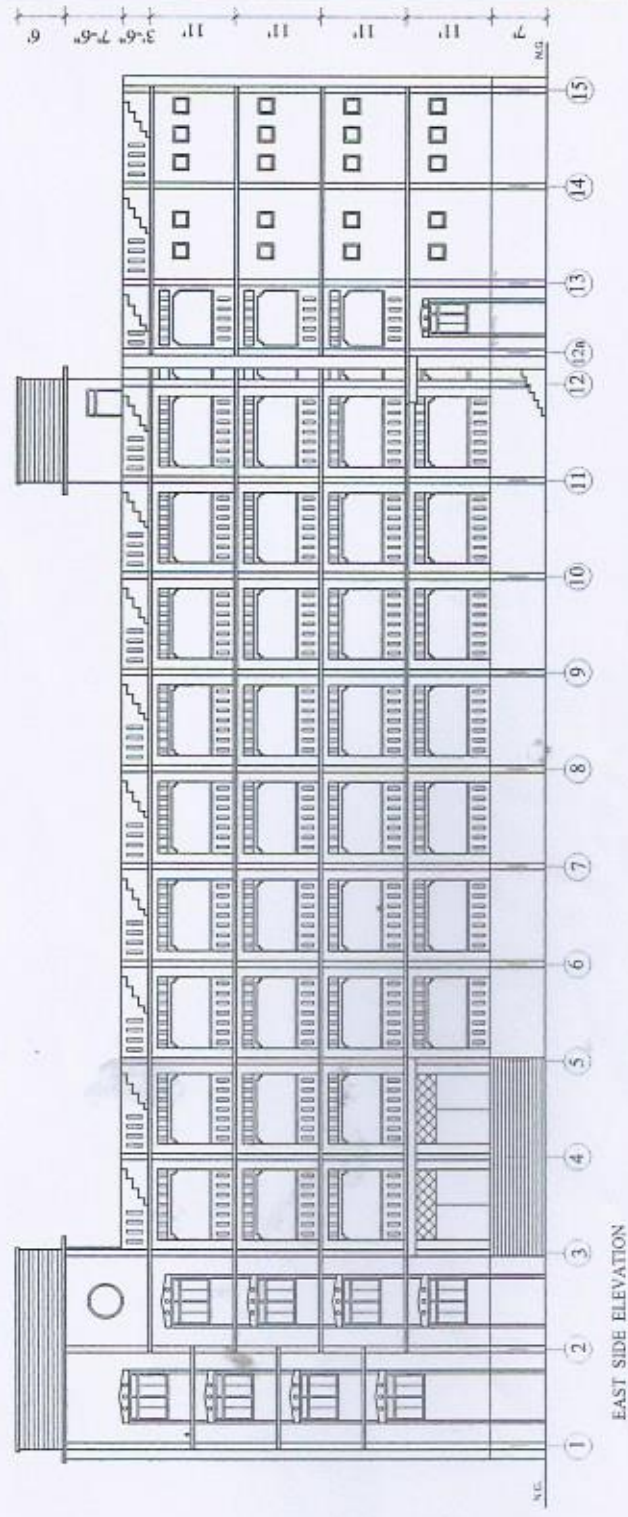


PROJECT <b>PROPOSED D.A.V. PUBLIC SCHOOL, ANISHABAD AT PALANGA, BIHAR.</b>	SHEET. NO.-1	DATE NOV.-17	archgroup architects, engineers, interior designers, 2/45, INDRAPURI, ROAD NO.-2, PATNA-24, PH-9430001170
	TITLE <b>SITE PLAN</b>		



EAST SIDE ELEVATION

PROJECT

PROPOSED D.A.V. PUBLIC SCHOOL, ANISHABAD AT PALANGA, PATNA, BIHAR.

DRG.NO.- 08

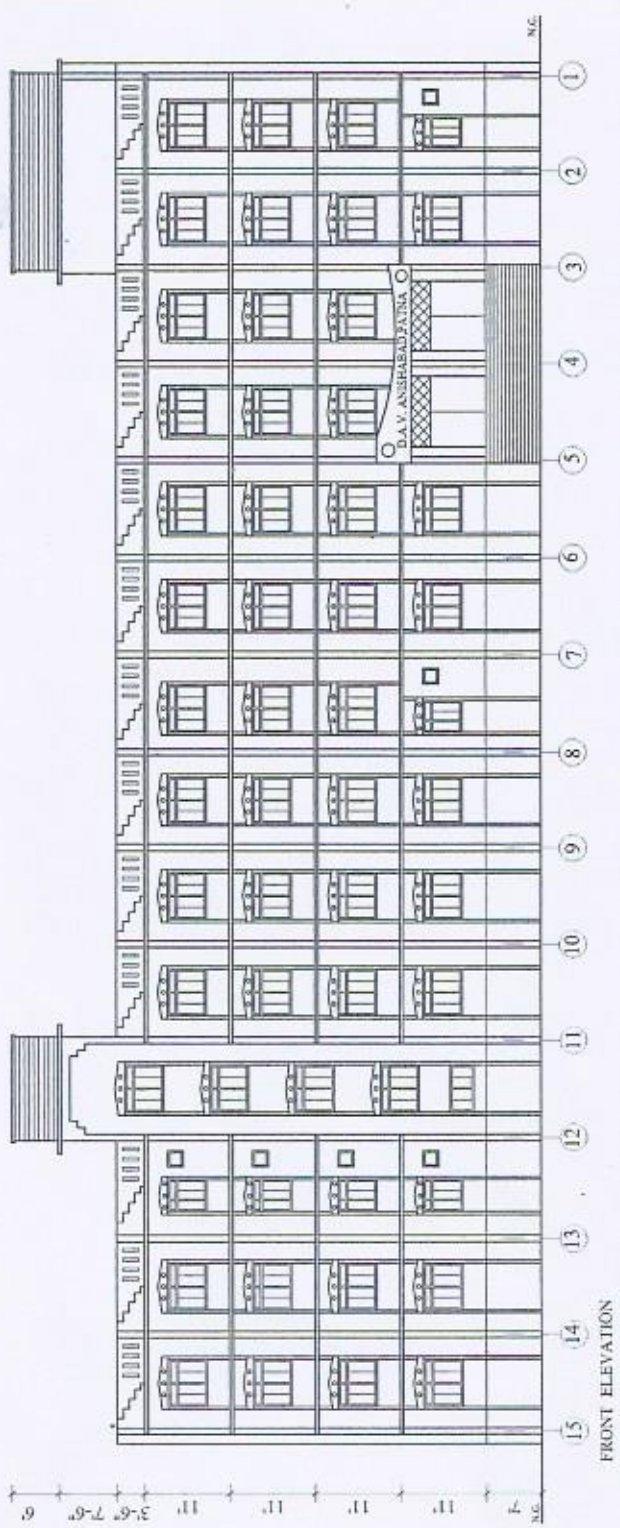
DATE  
NOV.-17



**archgroup**  
architects, engineers,  
interior designers,  
245, INDRAPUR,  
ROAD NO.-2,  
PATNA-24, PH-91300179

TITLE  
ELEVATIONS  
(BLOCK-1,PHASE-1)





PROJECT	PROPOSED D.A.V. PUBLIC SCHOOL, ANISHABAD AT PALANGA, PATNA, BIHAR.	
	DRG.NO.- 07	TITLE ELEVATIONS (BLOCK-1,PHASE-1)
DATE	NOV.-17	
 <b>archgroup</b> architects, engineers, interior designers, 245, INDRAPURI, ROAD NO.-2, PATNA-24. PH-04300170		



**DOORS & WINDOWS DETAIL**

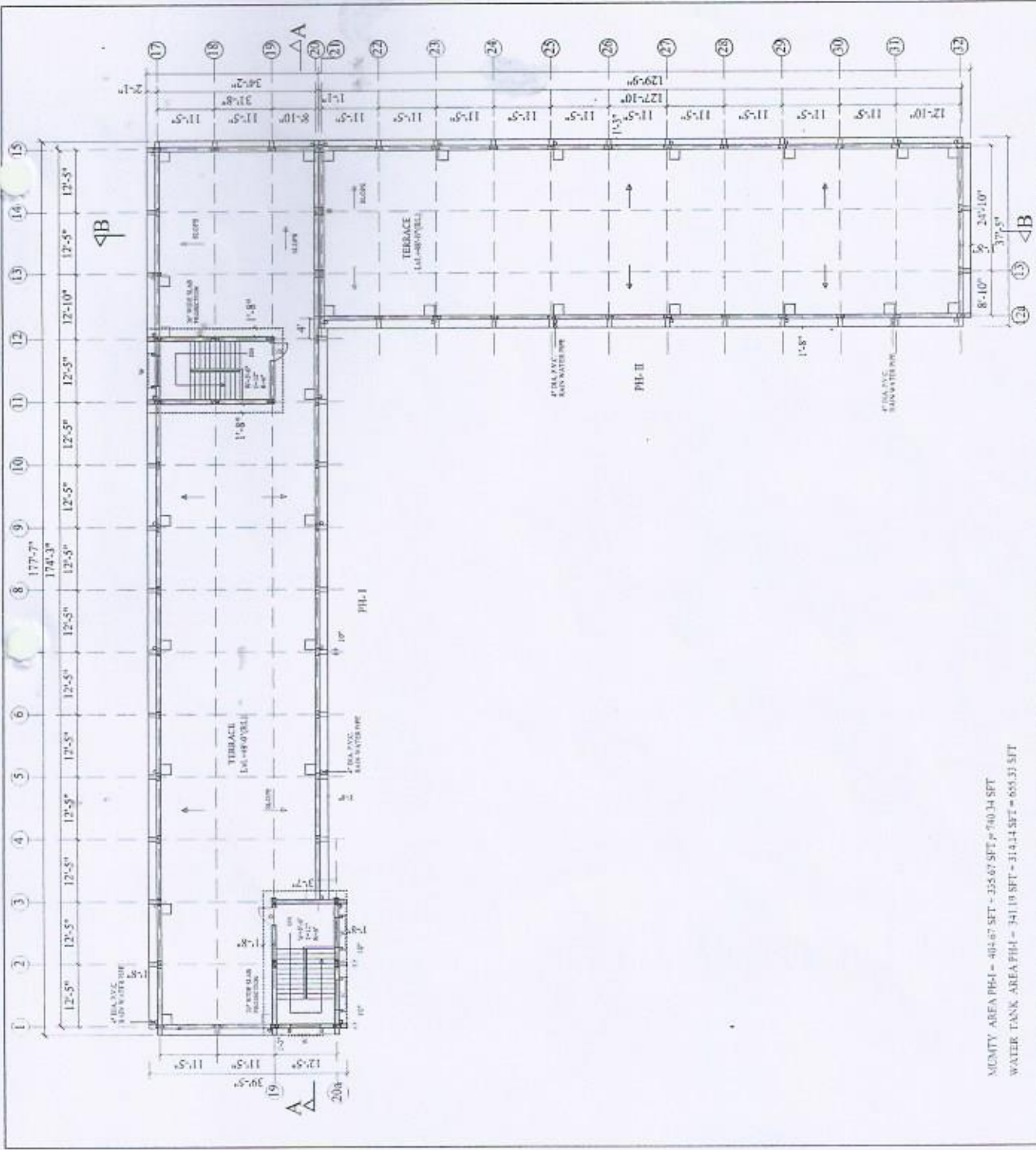
**I. GROUND, 1ST, 2ND, 3RD & TERRACE FLOOR**

TYP.	SIZE	S.L.	L.L.	DESCRIPTIONS
D	3'-6"X8'-0"	-	8'-0"	WOODEN DOOR WITH GLAZED VENTILATOR
MD	6'-0"X8'-0"	-	" "	" " " "
D1	3'-0"X8'-0"	-	" "	" " " "
D2	2'-6"X7'-0"	-	7'-0"	WOODEN DOOR.
W	6'-0"X5'-0"	3'-0"	8'-0"	STEEL GLAZED WINDOW WITH VENTILATOR
W1	4'-0"X5'-0"	" "	" "	" " " "
V	6'-0"X2'-0"	6'-0"	8'-0"	STEEL GLAZED VENTILATOR
V1	4'-0"X2'-0"	" "	" "	" " " "
V2	2'-0"X2'-0"	6'-0"	" "	" " " "
CD	9'-1"X8'-0"	-	8'-0"	COLLAPSIBLE STEEL DOOR
G1	9'-1"X1'-9"	8'-0"	9'-9"	MS GRILL OVER COLLAPSIBLE DOOR
G2	9'-1"X6'-9"	3'-0"	9'-9"	MS GRILL IN CORRIDOR
G3	8'-1"X6'-9"	" "	" "	" " " "
G4	9'-6"X6'-9"	" "	" "	" " " "
G5	8'-5"X6'-9"	" "	" "	" " " "
G6	6'-10"X6'-9"	" "	" "	" " " "

**BRIEF SPECIFICATIONS**

1. STRUCTURE- FRAMED STRUCTURE EARTH QUAKE PROOF WITH PILE FOUNDATION .
2. CONCRETE MIX -M20 (1 CEMENT, 1.5 SAND, 3 STONE CHIPS.)
3. FLOOR HEIGHT-11'-0"
4. PLINTH HEIGHT- +4'-0" FROM ROAD LEVEL.
5. TERRACE, TOILETS WILL BE MADE WATER PROOF.
6. PLINTH PROTECTION- 2'-6" HIGH, 3'-0" WIDE ALL ROUND THE BUILDING WITH 50MM THK. P.C.C. 1:3:6 OVER 75MM BED OF DRY BRICK BALLAST RAMMED , CONSOLIDATED AND GROUTED WITH FINE SAND INCLUDING TOP SMOOTH FINISH AS PER CPWD SPECIFICATION.
7. BRICK WORK -10"THK. IN C.M 1:6, 5"THK. IN C.M. 1:4.
8. PLASTERING-ON BRICK WALL C.M 1:6, CEILING & R.C.C. STRUCTURE-1:4.
9. FLOORING-CLASS ROOM WITH POLISHED KOTA STONE, COMMON AREA-MARBLE, TOILET -MARBLE/CERAMIC FLOOR TILES, P. OFFICE-VITRIFIED TILES.
10. DADO-4'-0"HEIGHT IN VERANDAH & 7'-0"HEIGHT IN TOILETS WITH CERAMIC WALL TILES.
11. DOOR- 30MM THK. KLIN SEASONED AND CHEMICALLY TREATED FLUSH DOORS OF GREEN CENTURY..
12. DOOR CHAUKHATE- 4"X2.5"THK. SAL WOOD OR HOLLOW SECTION PRESSED SHEET FRAME 18 GAUGE OR T-IRON FRAME ISNT 50.
13. WINDOWS-M.S. ANGLE 50X50X6MM FRAMED WITH CLEAR 4MM THK. GLASS FIXED WITH METAL BEADING.
14. PAINTING-EXTERNAL SURFACE-PREMIUM ACRYLIC SMOOTH WITH SILICONE ADDITIVES INTERIOR SURFACE-ACRYLIC OIL BOUND WASHABLE DISTEMPER WITH P.O.P.
15. PLUMBING & ELECTRICAL WORK WILL BE DONE AS PER DRAWING AND SITE..
16. STANDARD SPECIFICATIONS WILL BE FOLLOWED AND NO EXTRA PAYMENT TO BE GIVEN FOR MINOR CHANGES AS/SITE CONDITION.

PROJECT  PROPOSED D.A.V. PUBLIC SCHOOL, ANISHABAD AT PALANGA, PATNA, BIHAR.	DRG. NO.-10	DATE NOV.-17	<b>archgroup</b> architects, engineers, interior designers, 2/45, INDRAPURI, ROAD NO - 2, PATNA-24, PH-9430001170
	TITLE DOORS , WINDOWS DETAIL & SPECIFICATIONS (BLOCK-1, PH-1)		



MUMTY AREA PH-1 = 405.67 SFT = 375.67 SFT = 760.34 SFT  
 WATER TANK AREA PH-1 = 341.19 SFT = 314.14 SFT = 655.33 SFT

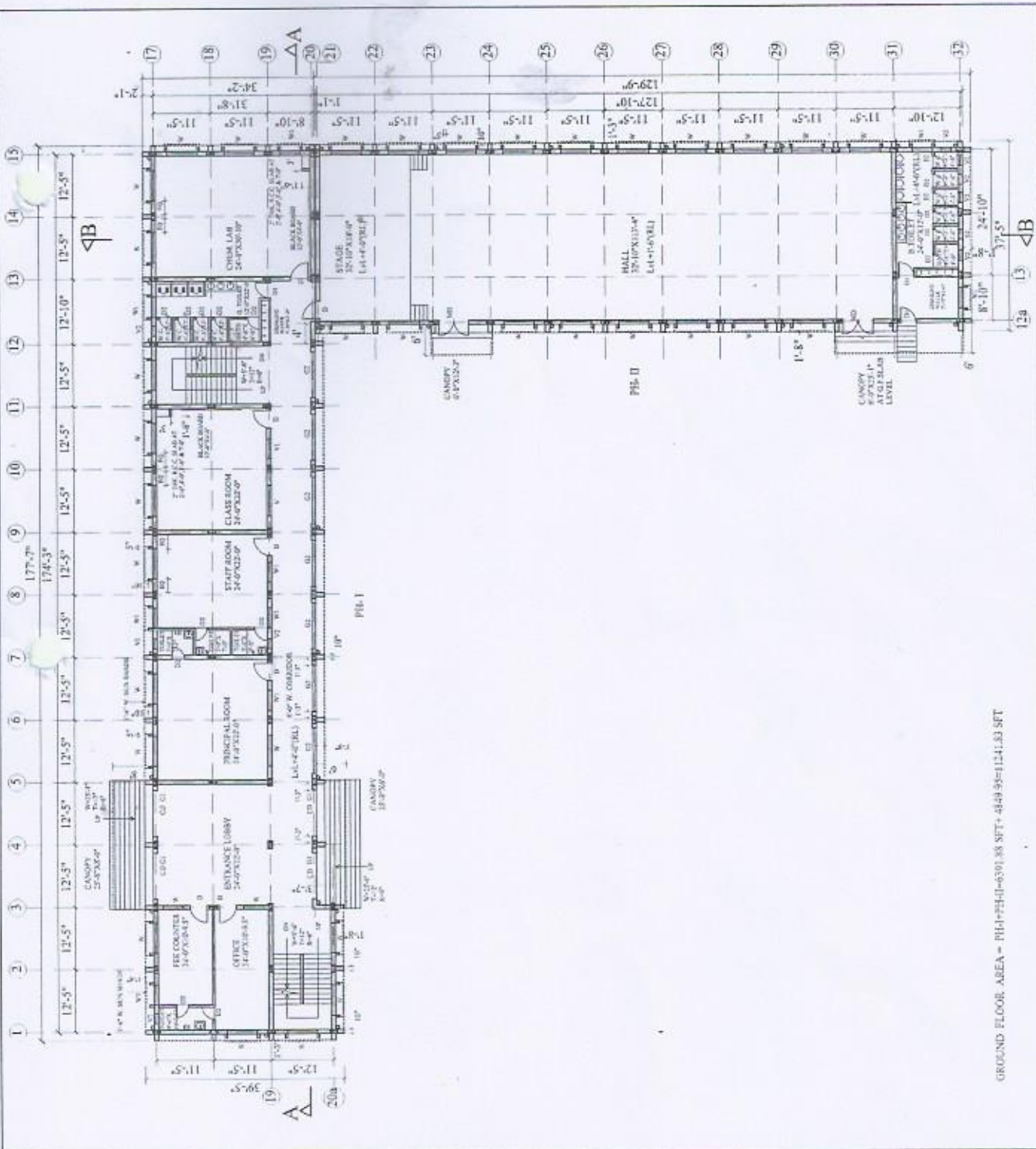
PROJECT  
**PROPOSED D.A.V. PUBLIC SCHOOL, ANSHABAD AT PALLANGA, PATNA, BIHAR.**

DRG.NO. - 06      DATE NOV.-17

TITLE  
**TERRACE FLOOR PLAN**  
 (BLOCK-1 PHASE-1)

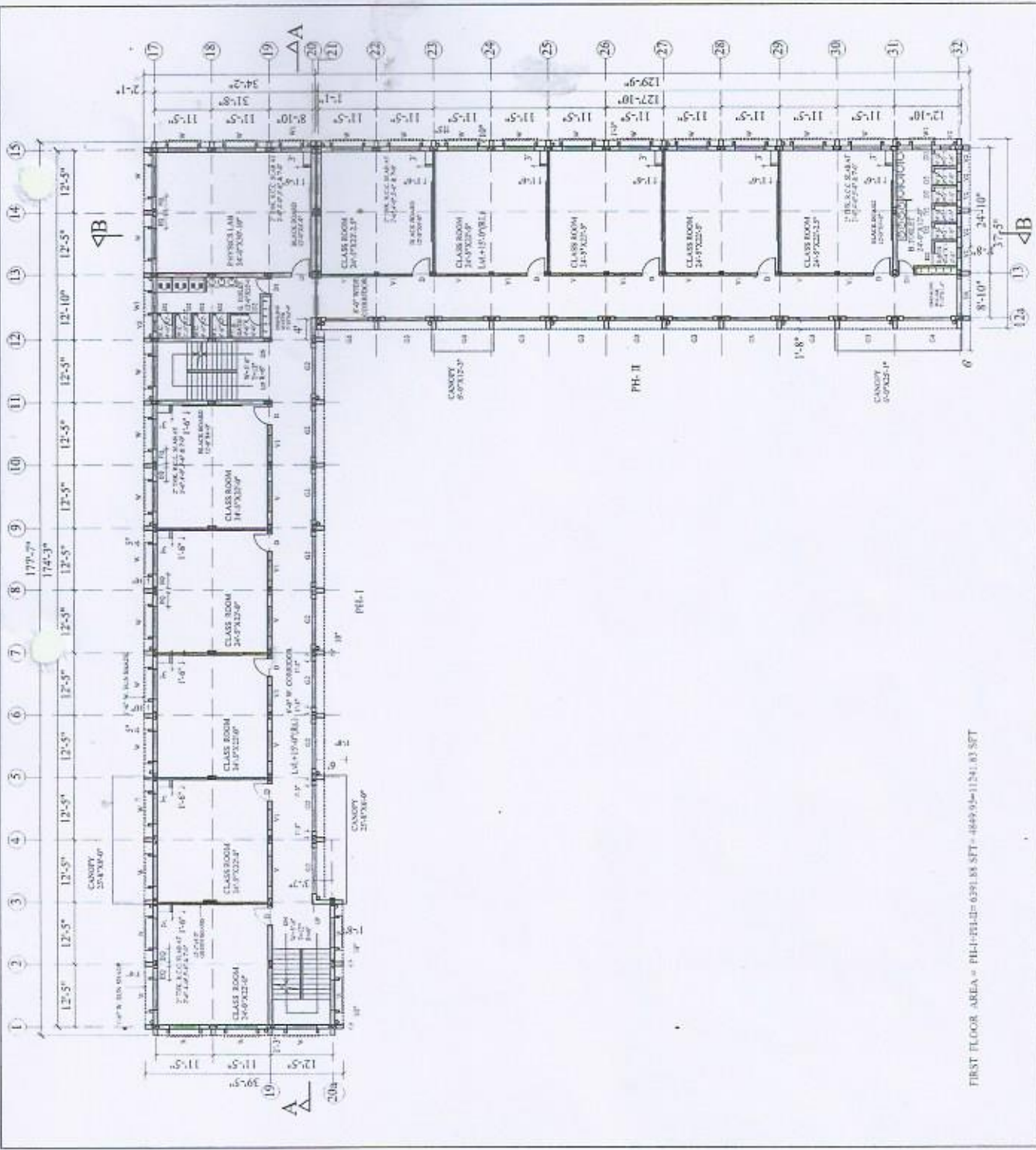
archgroup  
 architects, engineers,  
 interior designers,  
 PALLANGA, PATNA, BIHAR  
 PATNA-24, TEL-943001178






GROUND FLOOR AREA = 1114.77441-6301.88 SFT + 4849.95 = 1241.83 SFT

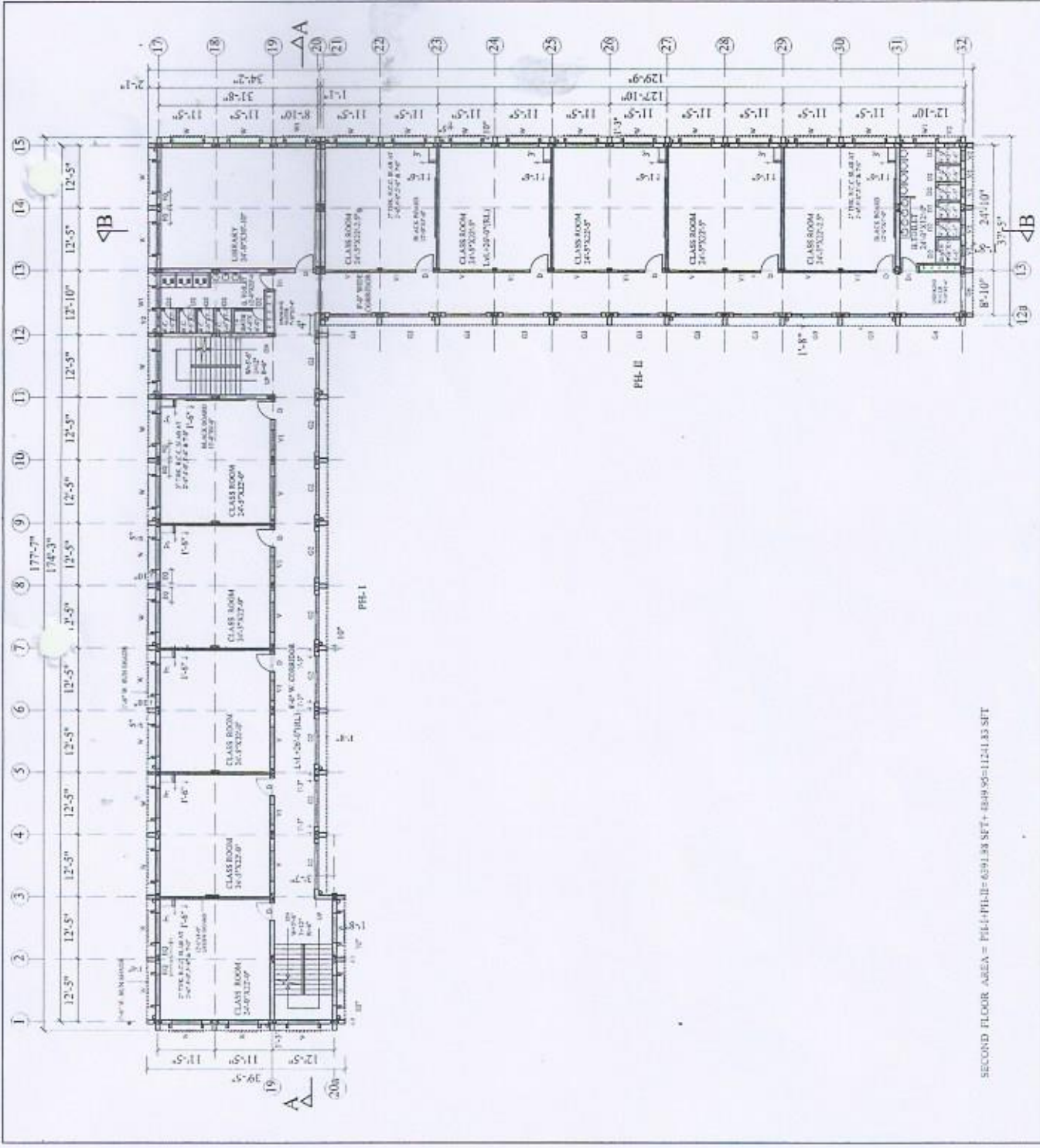
<p>PROJECT</p> <p><b>PROPOSED D.A.V. PUBLIC SCHOOL, ANISHABAD AT PALANGA, PATNA, BIHAR.</b></p>	<p>DRGNO. 02</p>	<p>DATE</p> <p>NOV.-17</p>	<p>archgroup</p> <p>architects, engineers, interior designers, SAC, INDRABHUMI, ROAD NO. 2, PATNA-1, BIHAR-800017</p>
	<p>TITLE</p> <p><b>GROUND FLOOR PLAN</b></p> <p>(BLOCK-I, PHASE-I)</p>		



FIRST FLOOR AREA = PH-I+PH-II= 6391.88 SFT+ 4649.94=11041.83 SFT

PROJECT	DRG.NO.- 03	DATE	NOV-17		<b>archgroup</b> architects, engineers, interior designers, 246, INDRAPURI, ROAD NO-2, PATNA-31, PIN-8000179
	PROPOSED D.A.V. PUBLIC SCHOOL, ANISHABAD AT PALANGA, PATNA, BIHAR.				

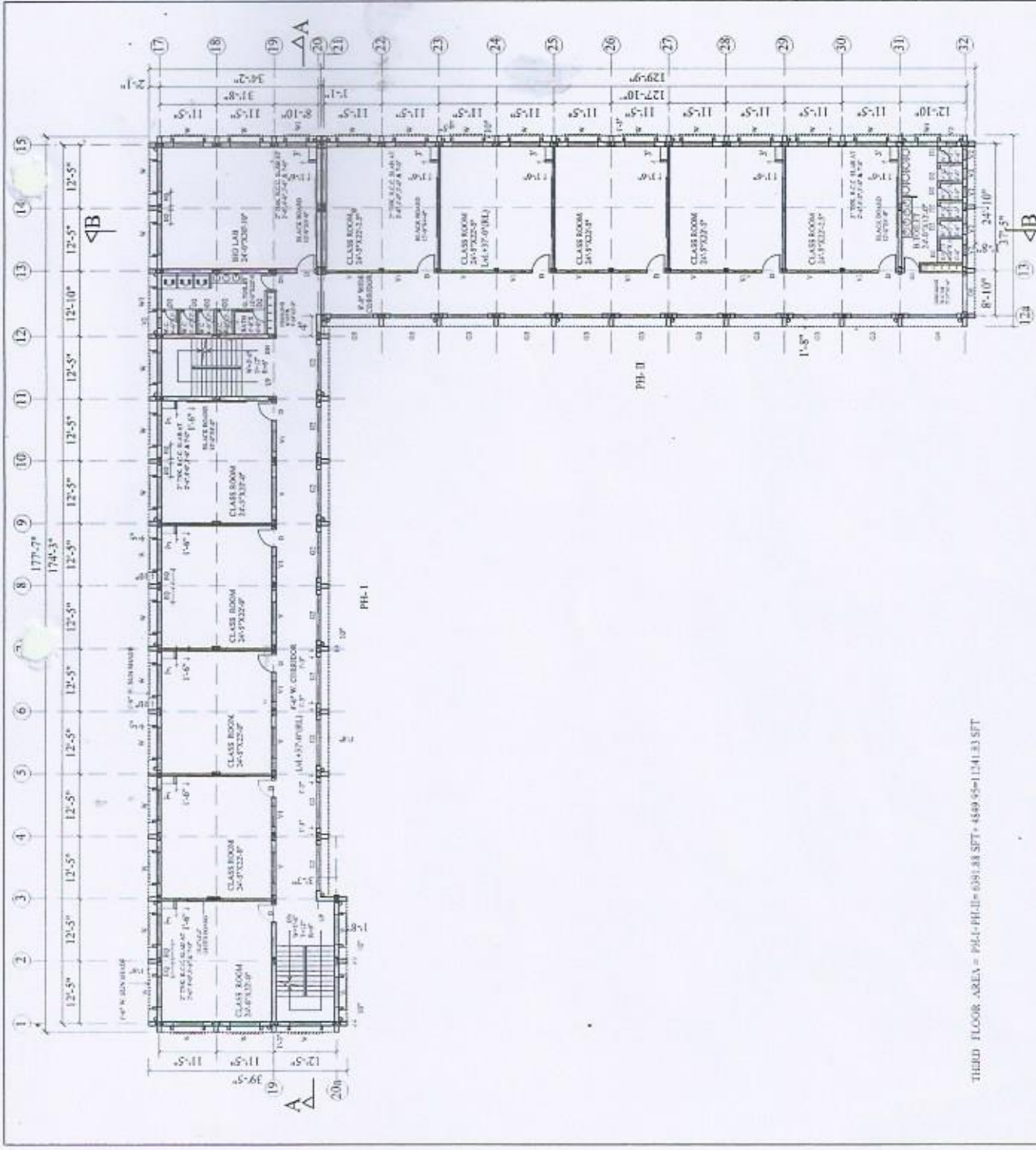




SECOND FLOOR AREA = PH-I+PH-II = 6391.88 SFT + 4849.95 = 11241.83 SFT

PROJECT	PROPOSED D.A.V. PUBLIC SCHOOL, ANISHABAD AT PAL-ANGA, PATNA, BIHAR.	
	DRG. NO. - 04	DATE NOV-17
TITLE		
SECOND FLOOR PLAN (BLOCK-1 PHASE-1)		
 architects, engineers, interior designers, 245, GURU-GOEL, PATNA-24, PIN-8000178		





THIRD FLOOR AREA = PH-1+PH-2 = 6391.88 SFT + 4389.55 = 11541.33 SFT

PROJECT	<b>archgroup</b> architects, engineers, interior designers, 2-45, INDIRA PARK, ROAD NO. 2, PATNA-54, PIN-800017	
	DRG. NO. - 05	DATE NOV-17
TITLE <b>THIRD FLOOR PLAN</b> (BLOCK-1, PHASE-1)		
PROJECT <b>PROPOSED D.A.V. PUBLIC SCHOOL, ANISHABAD AT PALANGA, PATNA, BIHAR.</b>		